

CONFIND





Ing. Simion Ioan
President



Ing. Ene Constantin
Managing Director

Since its foundation, the key goal of CONFIND company was to bring on the Romanian industrial market, the most recent trends of the complex and exclusive area of equipments, installations and components manufacturing, designed to satisfy the requirements of a modern economy. High qualification of the company specialists, a large range of products, high level of the quality, as well as prompt delivery time and the flexible price policy, ensured to CONFIND a special position on the domestic and international markets.

Thanks to a commercial strategy based on the permanent improvement of the quality level as well as the aesthetical and useful value of its products, CONFIND may be proud of the high consideration earned in the fairs and exhibitions where the company products have been presented, alongside of the products of well-known companies.

Bearing the brand of a high quality, the products manufactured by CONFIND represent the result of a careful selection of the raw materials and of a strict conformity in applying the technological processes.





COMPANY EVOLUTION

31st of May 1991

This is the date of the company foundation as a private company with limited liability. Since its foundation, up to the present time, the company capital increased 4 times. The company activity started with the production of assembly parts (nuts and bolts) for flanges and needle valves, manufactured using refurbished machine tools, in a hired workshop.

1992-1993

This period represents the first stage of the company development, when the range of the spare parts for sucker hole pumps has been assimilated for manufacturing. The fabrication of these components, in compliance with the API standard, required acquisition of some machine tools of high performance, gauges and measuring devices.

1993-1994

This is the second stage of development, when the fabrication of gas compressors implied the extension of the metrological activity and the purchasing of updated measuring devices. The heat treatment workshop was also founded that time, appropriately equipped, in order to perform carburizing, quenching, tempering, annealing.

1995

This is the year when the company activity has been simultaneously diversified to new directions of development as the design, homologation and manufacturing of new products:

- the mobile mini - gas station MICROSTA 12, a complex installation designed for fuel supply of the motor vehicles. The range of the mini-stations, manufactured in over 370 units until the end of 2008, has been subsequently extended with the designing and the manufacturing of the "SM14", diesel storage and filling module, made for companies vehicle fleets.
- gas radiator, made for gas wells, to prevent the criohdrates formation when the pressure drops. To perform these activities, CONFIND brought and equipped the workshop located in Campina, 6 Orizontului street.

1997

In 1997 the production of accommodation containers and industrial halls of steel structures has been developed. The production lines for these products are organized in the workshops located in Campina, 2 Progresului street, where the steel structure shops have been appropriately equipped.

1998

The rubber articles factory was bought from PCC STEROM and the company starting the production of the rubber parts.

1999

The following activities have been developed during 1999:

- manufacturing of drilling and production tools
- manufacturing of pressure vessels and steel structures for constructions
- forge
- heat treatments

2000-2002

During this period, CONFIND carried on with the production development. A specific workshop for the fabrication of tools, devices and gauges was built, as well as a workshop for machining equipped with CNC machine tools. The company extended its range of activity by the assimilation and manufacturing of new products as:

- PCP units – progressive cavity pumps
- GEC 160 gas compressors
- AM 10 workover rig, tyre type
- "Slug-catcher" liquid peg collecting installation
- Flare - stack equipment
- Condensate stabilizer

Starting with **2003**, CONFIND completed "key projects", on the domestic market as well as outside of Romania, in the field of gas fractioning and gas compression, water injection and oil gathering, treatment and separation.

All these projects have been completed by CONFIND, as general supplier or main contractor.

The following projects must be mentioned:

- gathering and treatment stations (in Romania and Kazakhstan)
- gathering plants (Kazakhstan)
- complex treatment plants for gas (Kazakhstan)
- gas fractioning plants (Kazakhstan)
- depots for oil and fuel storage (Romania, Sudan, Kazakhstan)
- loading/unloading plants

In **2007**, CONFIND founded, together with Smith International Ltd, a joint venture company having production shops in Campina, for the manufacturing of drilling and production tools using state of the art machines and high level technologies.

Confind has implemented SII Enterprise integrated system.

2008-2009

CONFIND together with CAMERON have developed the execution of electric/gas driven piston compressor packages in compliance with european standards.



RANGE OF PRODUCTS

The technical endowment of the company along with the specialists experience , enable the engagement of diversified fields, such as:

- Pressure equipments and heat exchangers
- Process skids
- Welded parts and heavy machining
- Drilling and production tools
- Workover rigs(40t, 50t)
- Progressive cavity pumps and piston pumps
- Sucker rod pumps and spare parts
- Storage tanks
- Gas compressors electric motor or gas driven engine
- Construction and assembly works EPCC
- Mobile mini-gas stations
- Repair of workover installations
- Rubber parts



1



2



4



3



5



6

- 1 Vertical mill for gypsum
- 2 Adsorbers for gas dehydration
- 3 Crude oil and gas gathering, primary treatment and separation plant
- 4,5,6 Complex equipments for oil&gas industry



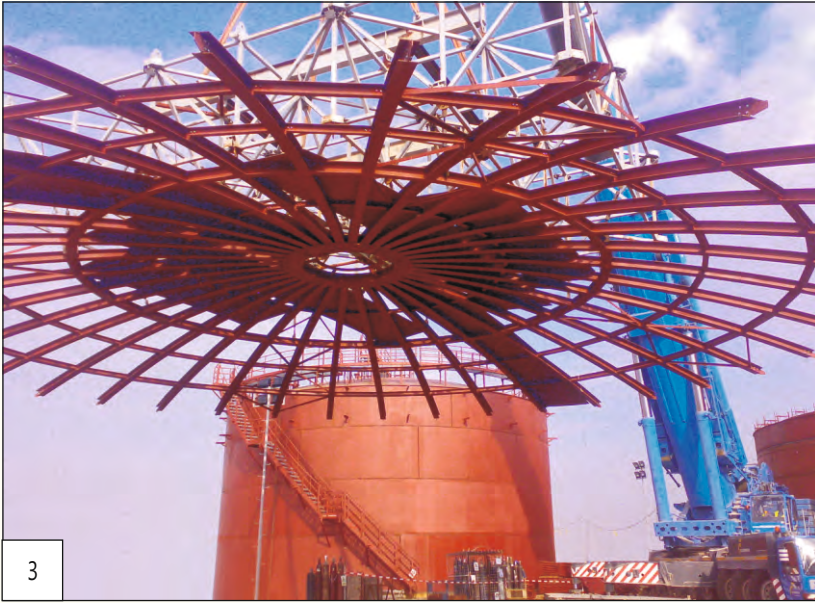
EQUIPMENTS FOR OIL&GAS INDUSTRY

- Crude oil/products storage tanks with fixed/floating roof and/or floating membrane
- Process tower
- Process skids
- Heat exchangers
- Horizontal three phase separators
- Transportable and non-transportable 2-phase and 3- phase test separator skids
- Skids for emulsion breaker preparation, dozing and injection
- Compressor packages(up to 4000 HP)
- Production skids(gathering and separation plants)
- Workover rig AM 10 type and AM 50 with rig type
- Crude oil/products tanks, with horizontal axis(atmospheric or pressurized)
- Salt water injection distributors
- Instrument gas preparation skids
- Salt water filters (for injection in oil reservoirs)
- Detachable pontoons for submarine piping assembly
- Launching-receiving scrapper traps
- Gas heaters(140, 210, 350 bar)
- Driving units for downhole progressive cavity pumps
- Beam pumping units manufactured according to API 11E
- Progressive cavity pumps for viscous fluids(salt water and crude oil)
- Gas compressors , GEC 160 type - 160 kW
- Compressor skids electrically or gas driven



- | | |
|---|---|
| 1 | <i>Electrocompressor GEC 160 type</i> |
| 2 | <i>Workover rig AM10</i> |
| 3 | <i>Oil/gas gathering, primary treatment, separation plant</i> |





- 1 Biomass boiler including erection on site
- 2 Gas driven compressor skid
- 3, 4 Double bottom/shell, dome roof storage tank
- 5 Gas dehydration units and heat exchangers





DRILLING AND PRODUCTION TOOLS

Cementing tools

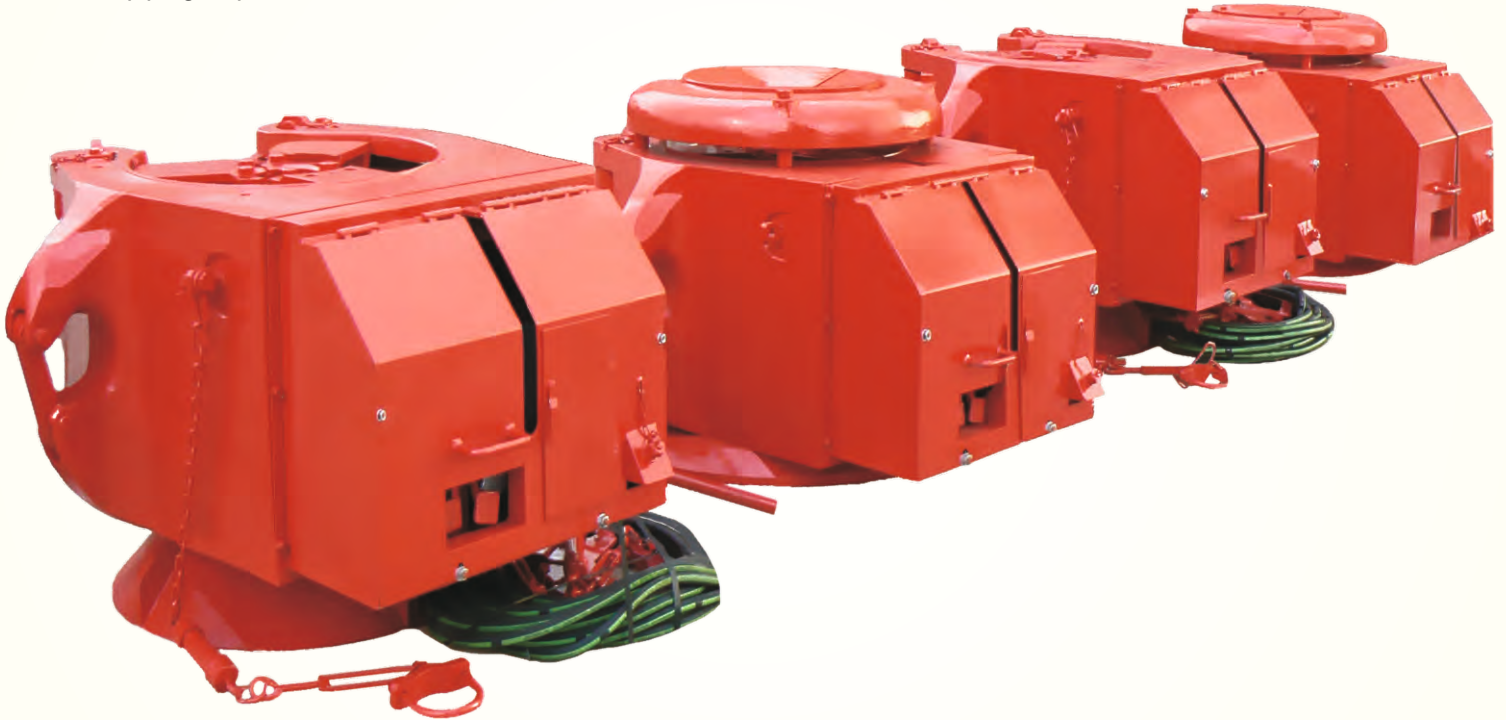
Circulating head with central valve
 Stage cementing head with by-pass and pressure compensator
 Cementing shoe and collar
 Cementing device by rods
 Stepped cementing device
 Bomb type plug
 Top cementing plug
 Bottom cementing plug
 Auxiliary plug
 Cementing head
 Extensible casing scraper
 Cup plug for pressure test

Drilling string tools

Roller reamer stabilizer
 Integral blade stabilizer
 Welded blade stabilizer
 Sleeve stabilizer
 Kelly cock
 Subs

Handling tools

Drill pipe center latch elevator, 90 degrees type
 Drill pipe center latch elevator, 18 degrees type
 Side door casing elevator, 90 degrees type



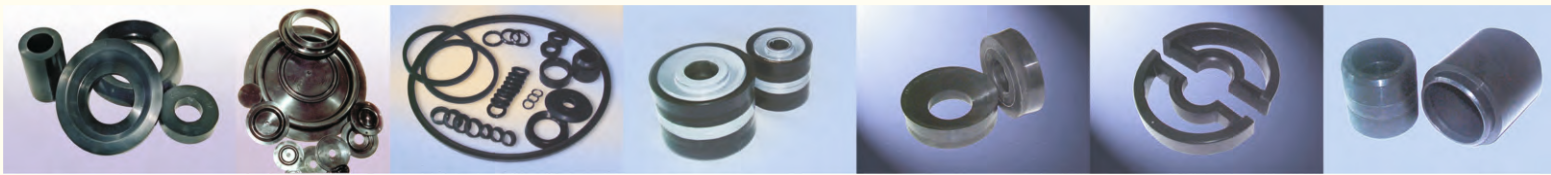
Fishing tools

Overshot "C" type
 Overshot "N" type
 Overshot "MI" type
 Sucker rod overshot
 Impression block
 Spear
 Tap
 Die collar
 Junk basket
 Safety lock joint
 Shaped surface safety joint
 Internal cutter for tubes
 External cutter for tubes
 Mechanical drilling jar
 Fishing magnet
 Mills
 Central latch tubing elevator square type
 Central latch tubing elevator, 18 degrees type
 Slip type tubing elevator

Slip type tubing spider
 Multi-segment casing slip
 Multi-segment drill collar slip
 Safety clamp
 Roller Kelly bushing, Kelly bushing, adapter
 Sucker rod hook
 Multi-dimensional tongs
 Snap-on type tubing tong
 Full grip type tubing tong
 Open type tubing tong
 Friction tong
 Chain tong

Power handling tools

Spider elevator
 Power tong for tubing
 Slip type tubing spider, hydraulically operated



RUBBER PARTS

CONFIND manufactures a large range of rubber parts for oil industry, as well as for other fields such as machine-building industry, metal-working industry, and refineries. Due to the technical and dynamic characteristics of these parts, CONFIND owns an important and constant segment on the specific market. CONFIND is now producing the complete range of rubber articles required for the installations which operate in crude oil, salt water, sulphuric acid and carbon dioxide, for a pressure average of 0,05-1400 bar and for a temperature between -60 °C and 270°C, as follows :

- air clutches, AB type below
- rubber bellows for air-hydraulic accumulators
- rubber bellows for ball vibration damper
- rubber gaskets for horizontal blow-out preventer
- rubber bellows for ventilated air clutches type AVB
- sealing gaskets for wellhead equipments
- rubber gaskets for bottom-hole pumps
- rubber gaskets for packers
- "F" cup gaskets
- sealing gaskets for mud pumps ("Mission" type piston)
- rod gaskets
- liner gaskets, sealing gaskets for cover valve, "o"-rings, membranes

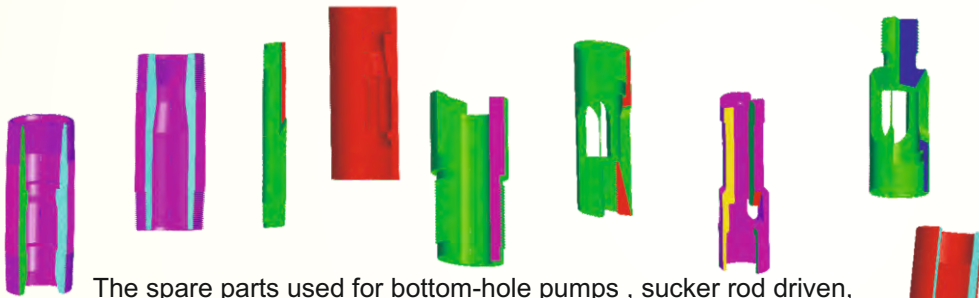
CONFIND manufactures rubber parts, rubbers-steel parts, rubber-textile parts and parts of textile coated with rubber. CONFIND is able to prepare the most modern types of rubber mixtures of crude rubber and synthetic

- elastomer butadiene-acrylonitrile hydrogenate
- elastomer butadiene-acrylonitrile carboxyl
- elastomer polychloroprene
- elastomer ethylene-acrylic
- elastomer silicon
- elastomer poly-acryl
- elastomer ethylene-propylene



SUCKER ROD PUMPS API 11 AX

CONFIND is one of the main suppliers of pumps and spare parts for sucker rod pumps as per API 11AX.

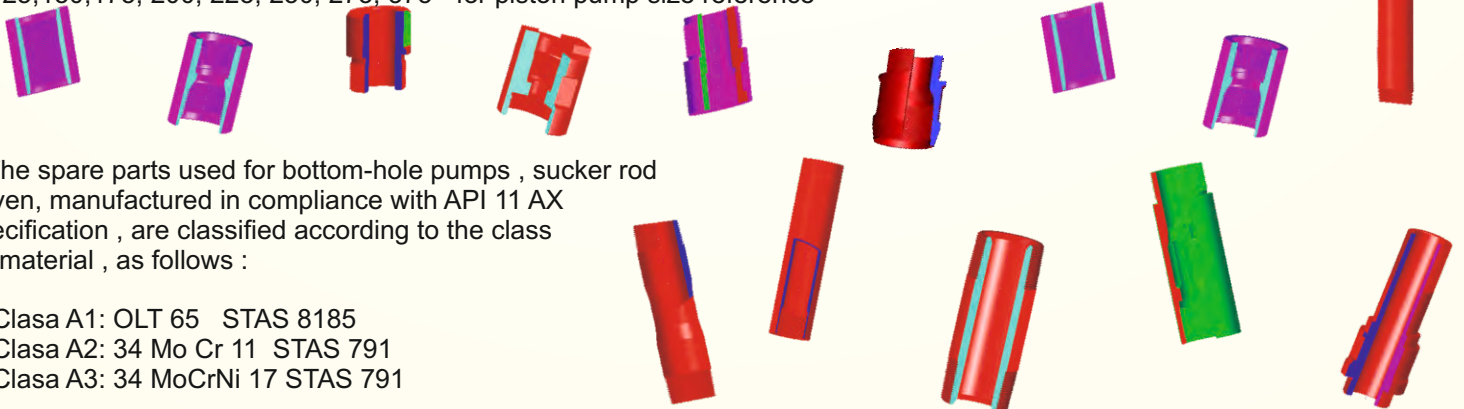


The spare parts used for bottom-hole pumps, sucker rod driven, manufactured in compliance with API 11 AX specification, are assorted as follows :

- B12, B13, B21, B22, B23,
- C11, C12, C13, C14, C15, C16, C17, C21, C22, C31, C32, C33, C34, C35, C36, C37
- G11
- N11, N12, N13, N14, N21, N22
- P11, P12, P 21, P31
- R11
- S11, S12, S13, S14, S15, S16, S17, S18, S19, S21, S22
- S31, S32, S33, S34
- T11
- V11

These are manufactured in the following sizes :

- 15, 20, 25, 30, 35, 40 - for tubing reference
- 125, 150, 175, 200, 225, 250, 275, 375 - for piston pump size reference



The spare parts used for bottom-hole pumps, sucker rod driven, manufactured in compliance with API 11 AX specification, are classified according to the class of material, as follows :

- Clasa A1: OLT 65 STAS 8185
- Clasa A2: 34 Mo Cr 11 STAS 791
- Clasa A3: 34 MoCrNi 17 STAS 791





CONTAINERS

CONFIND manufactures containers for different applications :

- dormitory
- storehouses
- canteen
- trailers
- offices
- cold storage room
- toilets / shower room
- medical facilities

MOBILE MINI-GAS STATIONS

The mobile mini-gas station with a storage capacity of 30 000 liters, is the only product of this kind , certified in Romania.

Designed for different types of fuel, the mini-gas stations MICROSTA 12 and SM 14 offer many advantages concerning the mobility, the installation and the operation.



- | | |
|---|--|
| 1 | Offices at nuclear power station Cernavoda |
| 2 | Accommodation compound Baghdad |
| 3 | Microsta 12 mini-gas stations |





PROCESSES

The experienced personnel and the technologies of high performance assure the a high level of the goods quality. The materials quality, as well as the products and technological processes quality are permanently verified.

- Cutting
- Rolling
- Forming
- Welding
- Turning
- Milling (2,3,4 axes)
- Grinding(ID, OD)
- Honing
ID=0-20mm, L=6000mm
- Gun drilling
ID=0-20mm, L=6000mm
- Trepaning
ID=40-300mm, L=6000mm



- Forging
- Hard chrome plating
ID=40-300mm,L=6000mm
- Zinc plating
- Phosphating
- Hard facing, dressing
- Blasting
- Painting
- Penetrating radiations
- Magnetic particles
- Ultrasonic
- Stress relieving, carburizing, quenching, tempering, hardening by means of high frequency current

LABORATORIES

The main purpose of CONFIND, is the compliance with the clients requirements and specific applicable standards , for a safe development in the industrial field. We are experienced in quality management assurance, for the compliance with the applicable standards and clients requirements. We are working in a quality assurance system and we pay attention to the impact which our activities may have on the environment.

CONFIND has a separate laboratory for nondestructive control which performs the following verifications :

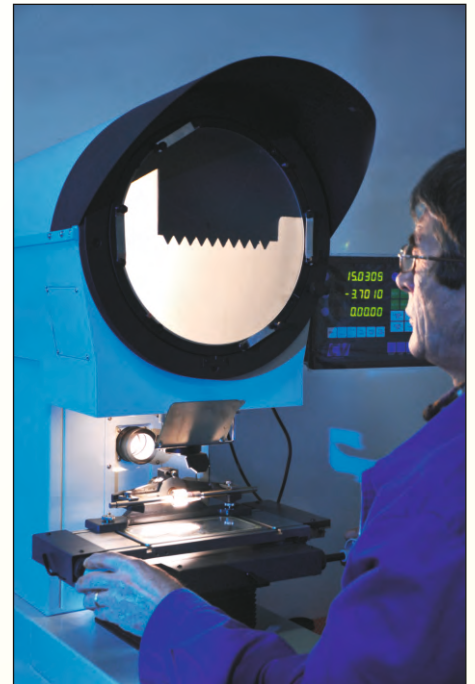
- X-ray radiography
- magnetic powder
- penetrating fluids
- ultrasonic

The nondestructive control laboratory is certified according to ISCIR,ISC and CNCAN requirements. The laboratory personnel is also licensed according to ISCIR, ISC,TUV,SNT-TC-1A and PED requirements.

CONFIND has also a laboratory for materials examination and one for rubber examination.

The laboratory for metal examination performs the following verifications :

- tensile test
- bending
- measurement of Brinell, Rockwell, Vickers and Vickers-Knoop hardness
- verification of Charpy resilience
- spectral analysis(ferrous and non-ferrous)
- metallographic analysis



The laboratory for rubber testing is appropriately outfitted for the determinations of the vulcanization operation characteristics, rubber characteristics (at the surrounding temperature and at high temperatures up to 270 °C) , elastic properties, viscosity and mixtures density, examination of rubber components and rubber preparation.

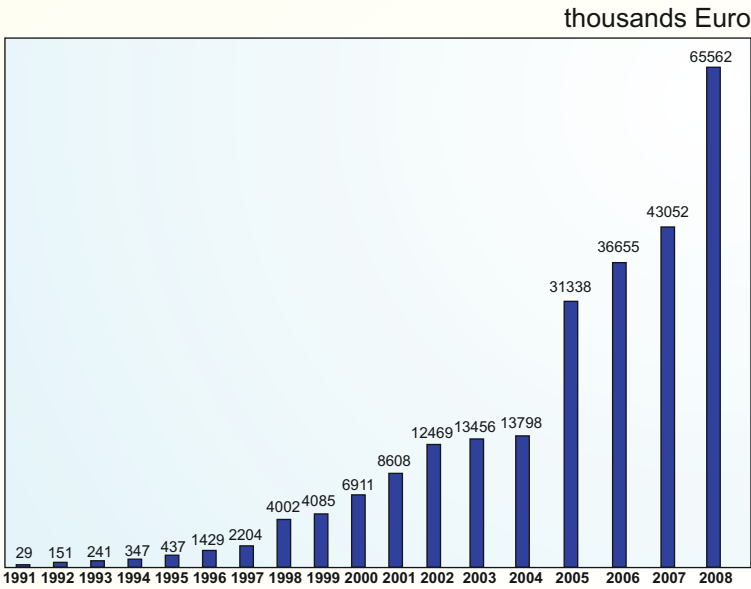
The laboratories are certified according to international standard ISO/IEC 17025 requirements and are RENAR authorized for rubber testing.



TURNOVER

The permanent development of the products range, as well as the investments performed to modernize the equipments , generated the economic results of the company.

The turnover continuously increased since the company foundation up to the present time demonstrates the constant growth of the company.



HUMAN RESOURCES

In the same time with the activity development and the extension of production area, the volume of the employees was permanently increased.

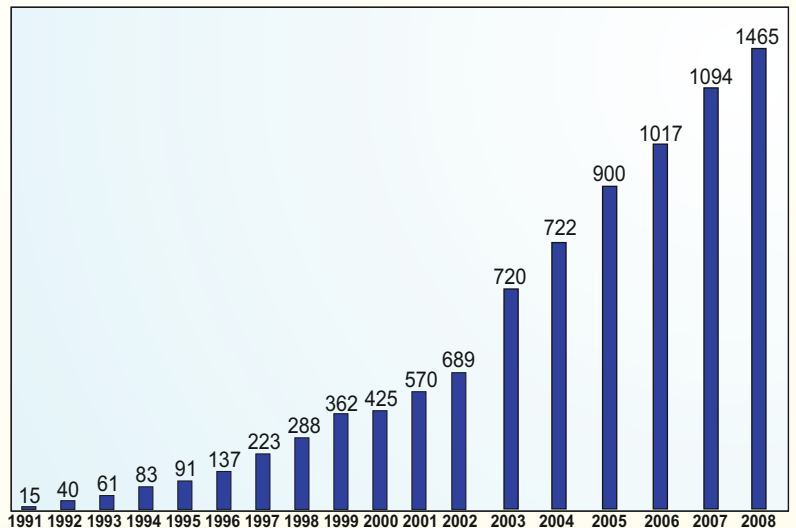
The present personnel configuration, according to the level of education is :

- university graduation - 118
- high school - 145
- industrial school - 1202

The personnel training is in the permanent attention of the company management.

For this reason, several training courses have been attended by the company personnel, as :

- foreign languages training
- automatic data processing training
- computer designing training
- welders training
- controllers training for modern measuring equipment operation
- three-D modeling training
- programming based on three-D models
- training of CNC operators
- project management training
- training for the use of programs for pressure vessels sizing
- marketing , sales promotion, foreign trade



Complex gas treatment and processing plant, Borankol-Kazakhstan



Str Progresului Nr 2
Campina, Prahova, Romania
Tel: +40 244 373 709/333 160
+40 244 334 116/334 632
Fax: +40 244 374719
www.confind.ro
E-mail: confind@confind.ro



CONFIND